



SAHARA GRAND

No Boundaries

Congratulations on your purchase of this quality Tentco product. This tent is a frame tent with the tent suspended below the frame and the flysheet fitted over the top of the frame. If it is to be used as a semi permanent tent we strongly recommend that the tent be pitched either on a wooden deck or a slab.

Go to www.tentco.co.za to view instructional videos on how to erect your tent

Tent & Frame assembly

1. Remove tent from the bag and lay flat on the ground or deck. Place the flysheet aside for later
2. The frame is assembled by matching the colour coded poles to their matching coloured corners.
3. Assemble the roof top section inserting only the top half of the legs
4. The tent is attached to the frame with the steel S-hooks with the extra section at front for verandah.
5. Attach the S hooks of the roof section to the roof frame and the top half of the leg poles.
6. Pull the flysheet into position over the frame.
7. Now lift the frame and insert the bottom half of the legs, one side at a time
8. Now the tent is up, open the door to allow air in and spread the groundsheet out until sits well.
Clip the remaining S hooks to the leg poles.
9. Pull the ground sheet tight and secure at all anchor points using straight pegs.
10. The flysheet frontlegs are anchored to the ground around the poles, guyropes are pulled outward and anchored to ground with anchor pegs.
11. There is a vent in the bathroom roof and flysheet to accommodate optional shower.
12. See list of do's and dont's and care instructions for further useful information.

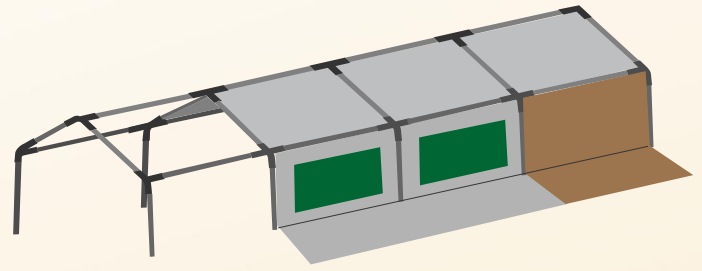


www.tentco.co.za

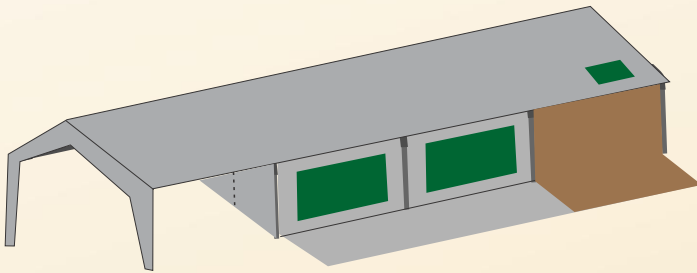
Sahara Grand



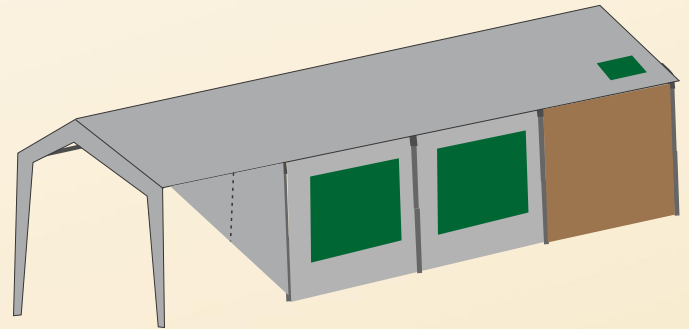
Build frame matching colour coded corners
Insert only bottom half of legs.
Place frame in desired position



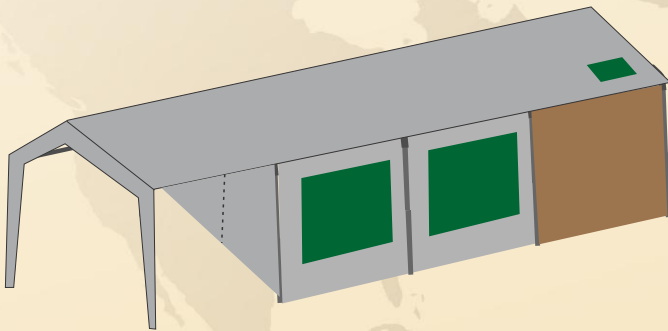
Attach tent to frame with the S-hooks



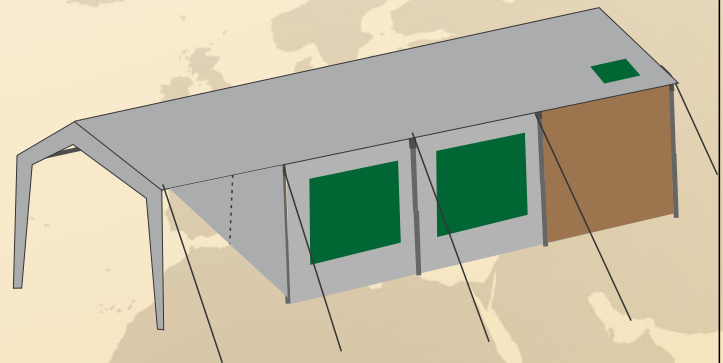
Pull flysheet over the top of the frame



Insert bottom half of poles one side at a time



Pull canvas into correct position and put straight pegs into all peg points



Use anchor pegs to secure the guyropes

